

# MONTHLY MEMBERSHIP PROGRESS REPORT

District 321A2

Results as of: 9/30/2023

GMT:

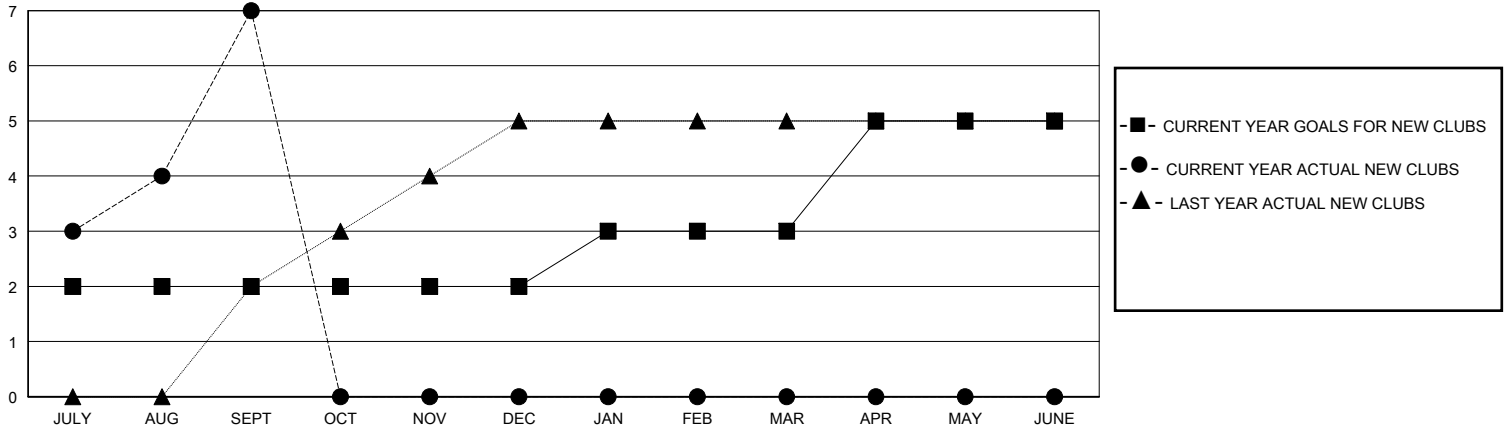
LOCATION INDIA

GMT CA

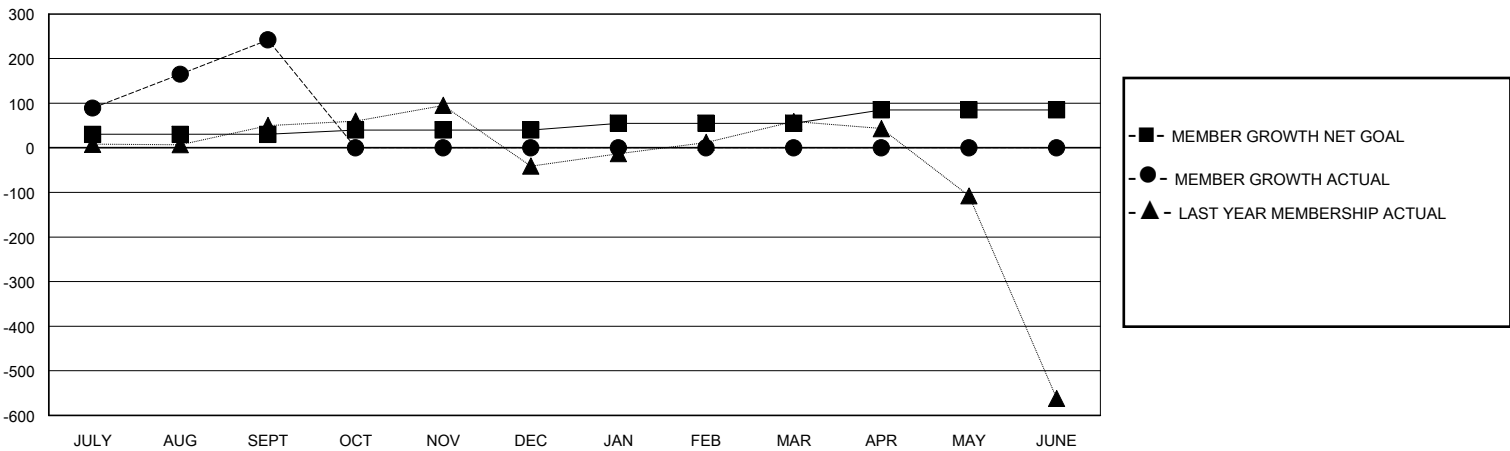
Clubs			
RESULTS FOR 2023-2024			
QUARTER	NEW CLUB GOAL	NEW CLUBS	DROPPED CLUBS
JULY/AUG/SEPT	2	7	2
OCT/NOV/DEC	0	0	0
JAN/FEB/MAR	1	0	0
APR/MAY/JUNE	2	0	0

Members			
RESULTS FOR 2023-2024			
QUARTER	MEMBER GROWTH NET GOAL	MEMBER GROWTH ACTUAL	DROPPED MEMBERS ACTUAL (including transfers)
JULY/AUG/SEPT	30	396	124
OCT/NOV/DEC	10	0	0
JAN/FEB/MAR	15	0	0
APR/MAY/JUNE	30	0	0

GOALS AND ACTUAL NEW CLUBS CUMULATIVE



GOALS AND ACTUAL MEMBERS CUMULATIVE



DROPPED CLUBS: 2	63 CLUBS OF 153 ADDED 1 OR MORE NEW MEMBERS	<u>GENDER DISTRIBUTION</u>	
<u>DROPPED MEMBERS</u>		MALE	2,541 (65.66%)
DECEASED	1	FEMALE	1,329 (34.34%)
CLUB CANCELLED	0	TOTAL FAMILY UNIT MEMBERS	2,604
OTHER	123	FAMILY MEMBERS PAYING HALF DUES	1,609
TOTAL	124	<a href="#">CLICK HERE FOR CUMULATIVE MEMBERSHIP DATA</a>	